

1997 JUN 10 PM 2:43

078319

MT. OLIVE SHORES NORTH

Section 31 & 32, Township 26 South,
Range 25 East

STATE OF FLORIDA
COUNTY OF POLK

DEPT 115 45.00
843 #
CHECKS 45.00
7874A

06/10/97

FILED FOR RECORD this

June 10, 1997

Recorded in Plat Book 104,

Page(s) 38, 39

Record verified

E. D. "Bud" Dixon
Clerk Circuit Court

By Martha H. Crowe
Deputy Clerk

ejw

Mt. Olive Shores NORTH

A SUBDIVISION LYING IN SECTION 31 & 32, TOWNSHIP 26 SOUTH, RANGE 25 EAST, POLK COUNTY, FLORIDA

P.B. 104 PG. 31
SHEET 1 of 2

APPROVAL: COUNTY ENGINEER
STATE OF FLORIDA
COUNTY OF POLK

This plat is hereby approved by the Polk County Engineering Department this 4th day of JULY, A.D. 1997.

[Signature]
COUNTY ENGINEER

APPROVAL: COUNTY COMMISSION
STATE OF FLORIDA
COUNTY OF POLK

This plat, approved this 18th day of JULY, A.D. 1997, by the Board of County Commissioners of Polk County, Florida.

[Signature]
COUNTY COMMISSIONER

APPROVAL: PLANNING DEPARTMENT
STATE OF FLORIDA
COUNTY OF POLK

This plat is hereby approved by the Polk County Planning Department this 4th day of JULY, A.D. 1997.

[Signature]
PLANNING DEPARTMENT

CLERK OF CIRCUIT COURT
STATE OF FLORIDA
COUNTY OF POLK

I, Deborah A. Smith, Clerk of Circuit Court of Polk County, Florida, do hereby certify that this plat was filed for record in the public records of Polk County, Florida, on this 4th day of JULY, A.D. 1997.

[Signature]
CLERK OF CIRCUIT COURT

SURVEYOR'S CERTIFICATE
STATE OF FLORIDA
COUNTY OF POLK

I, Robert E. Long, Surveyor, do hereby certify that this plat was prepared and submitted to the Polk County Board of County Commissioners for their review and approval, and that the same complies with all the requirements of Chapter 177, Florida Statutes. Survey data complies with all the requirements of Chapter 177, Florida Statutes.

[Signature]
SURVEYOR

April 14, 1997

DEDICATION
STATE OF FLORIDA
COUNTY OF POLK

The undersigned, Michael R. Brady, do hereby dedicate to the public use of the State of Florida, the land described and shown herein, and the same shall be held in trust for the use of the public. The dedication is made in accordance with the provisions of Chapter 177, Florida Statutes, and the same shall be held in trust for the use of the public. The dedication is made in accordance with the provisions of Chapter 177, Florida Statutes, and the same shall be held in trust for the use of the public.

[Signature]
DEDICATOR

Michael R. Brady

ACKNOWLEDGEMENT
STATE OF FLORIDA
COUNTY OF POLK

I, Michael R. Brady, do hereby acknowledge that the land described and shown herein, and the same shall be held in trust for the use of the public. The dedication is made in accordance with the provisions of Chapter 177, Florida Statutes, and the same shall be held in trust for the use of the public.

[Signature]
ACKNOWLEDGEMENT

CONSENT TO DEDICATION
STATE OF FLORIDA
COUNTY OF POLK

I, Michael R. Brady, do hereby consent to the dedication of the land described and shown herein, and the same shall be held in trust for the use of the public. The dedication is made in accordance with the provisions of Chapter 177, Florida Statutes, and the same shall be held in trust for the use of the public.

[Signature]
CONSENT TO DEDICATION

ACKNOWLEDGEMENT
STATE OF FLORIDA
COUNTY OF POLK

I, Michael R. Brady, do hereby acknowledge that the land described and shown herein, and the same shall be held in trust for the use of the public. The dedication is made in accordance with the provisions of Chapter 177, Florida Statutes, and the same shall be held in trust for the use of the public.

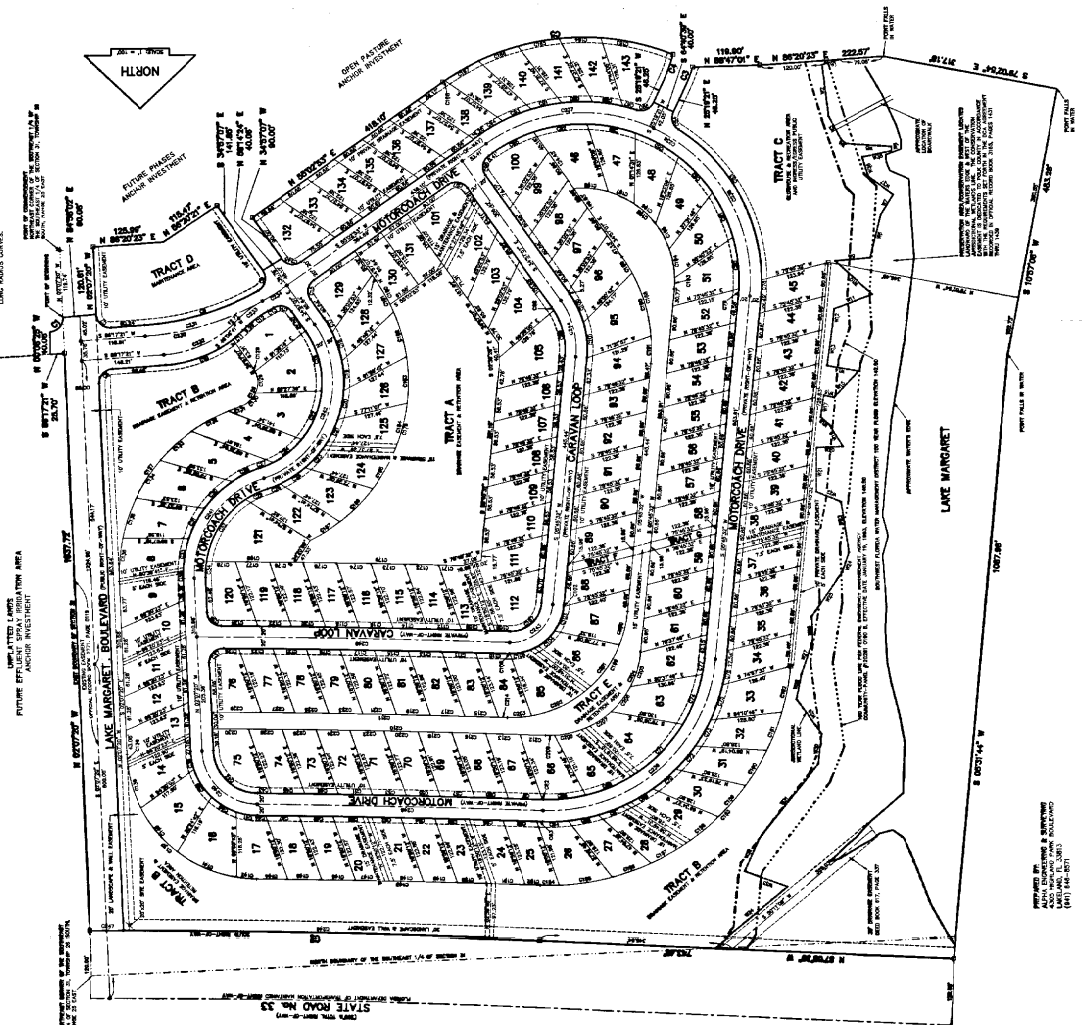
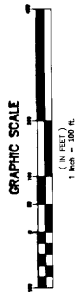
[Signature]
ACKNOWLEDGEMENT

Michael R. Brady

A SUBDIVISION LYING IN SECTION 31 & 32, TOWNSHIP 26 SOUTH, RANGE 25 EAST, POLK COUNTY, FLORIDA

SURVEYOR'S NOTES

□ INDICATES 4" x 4" x 30" CONCRETE MARKER WITH PRE- STAMPED P.R.M. 2280.
 * INDICATES DISC IN PAVEMENT OR 4" x 4" x 30" CONCRETE MARKER STAMPED P.C.P. 2280.
 NOTE: COMPUTER ROUNDING CAUSES A SLIGHT CUMULATIVE DIFFERENCE IN OVERALL LENGTHS vs. INDIVIDUAL LOT TOTALS AND IN CURVE DATA, ESPECIALLY IN THE

[illegible][illegible]